

उत्तर प्रदेश UTTAR PRADESH

BF 077879

THIS AGREEMENT is made this 23rd day of Jan 2013 (hereinafter called the Effective Date), by and between M/s DSM Sugar Rajpura (A Unit of Dhampur Sugar Mills Ltd.) registered under the Company's Act 1956 and having its registered office at Dhampur Sugar

Mills Ltd, N.Railway Distt-Bijnor -246761 (UP) hereinafter called the "Generating Company", which expression shall, unless repugnant to the context or meaning thereof, include its successors and assignees as party of the first part and Paschimanchal Vidyut Vitran Nigam Ltd., a Company registered under the Company's Act, 1956, having its Registered Office at Victoria Park, Meerut hereinafter called "DISCOM", which expression shall, unless repugnant to the context or meaning thereof, include its successors and assignees as party of the second part

WHEREAS, the Generating Company is engaged in the business of Bagassed based Power Generation and other incidental businesses situated at Vill & P.O -Rajpura, Babrala Hasanpur Road, Distt-Sambhal -243727(U.P) in the State of Uttar Pradesh, more particularly described in Annexure I attached hereto and made a part hereof and,

WHEREAS, DISCOM is a distribution licensee operating in the State of Uttar Pradesh, and has license to supply power in earmarked part of the State and further the DISCOM in its Board of Directors Meeting held on 24-8-05 and subsequently on 20-7-10 have authorized U.P. Power Corporation Ltd. to enter into this Agreement on their behalf and to do all other relevant and incidental things, as may be required.

WHEREAS the Generating Company owns and operates power generation Unit aggregating to 12 MW for their self use (commissioned in 2006, not connected with Grid) and has undertaken to implement the new power project by installing Plant and Equipment having installed capacity of 40 MW situated at Vill & P.O -Rajpura, Babrala Hasanpur Road, Distt-Sambhal (hereinafter referred to as the Plant) its production facility and complete erection, installation and commissioning of the said capacity and make it operational by 02-04-14 and



[Handwritten signature]

[Handwritten signature]
CE (P.P.A.) I
U.P.P.C.L.
Shahid Bhawan Bldg

WHEREAS, the Generating Company desires to sell maximum upto 40 MW power generated in the new Generating Plant's facility of 40 MW, and DISCOM agrees to purchase electricity generated from such capacity by the Generating Plant for sale, under the terms and conditions set forth herein, and

WHEREAS the Generating Company agrees to purchase 6 MW power for its such plant from DISCOM and DISCOM agrees to supply 6 MW power to such plant at retail tariff as per Regulations specified by the Commission, and

WHEREAS the parties to this Agreement agree for prior consultation with the State Transmission Utility for the purpose of implementation of this agreement and seek its approval for permitting, inter alia, interconnection to the generating plant with the 132/33 KV Babrala grid substation owned by STU and

WHEREAS the parties to the agreement bind themselves for compliance of all relevant provisions specified by the Commission in different regulations regulating the functioning of State Transmission Utility, other Transmission Licensee and State Load Despatch Centre.

Now, therefore, in consideration of premises and mutual agreements, covenants and conditions set forth herein, it is hereby agreed by and between the parties as follows:

1. DEFINITIONS

Other than those defined below, the words/expressions used in this agreement, unless repugnant to the context, shall have the meaning assigned to them in the Electricity Act, 2003, UP Electricity Reforms Act, 1999 and U.P. Electricity Grid Code as amended from time to time, "UPERC (Captive and Non-Conventional Energy Generating Plants) Regulations, 2009" shall mean in short "CNCE Regulations, 09"; as amended from time to time, and the rules framed there under. The words/expressions listed below shall have the meanings respectively assigned hereunder.

1.1 'Bill Meter' means ABT compatible Import and Export Meter on the basis of which energy bills shall be raised by the Generating Plant/DISCOM.

1.2 'Check Meter' means ABT compatible Import and Export Meter for performing a check on the accuracy of the Bill Meter.

1.3 'Date of Commissioning' means the date on which supply of Energy is commercially commenced by the Generating Plant to DISCOM and includes COD.

1.4 'Export Meter' means Bill Meter installed at the grid substation 132/33 KV Babrala of STU for measurement of Active Energy, Maximum demand and Power factor for Energy exported to the Generating Plant from STU's Grid Sub-Station 132/33 KV Babrala.

1.5 'Energy Account Month' means period from date of meter reading in previous month to date of meter reading in following month and such period should not exceed 35 days.

1.6 'Sub Station' means sub-station 132/33 KV Babrala owned, maintained and operated by UP Power Transmission Corporation Limited

1.7 'Import Meter' means Bill Meter installed at the grid substation of STU for Measurement of Active Energy, Maximum demand and Power factor of Energy Imported to DISCOM from the Generating Plant.

1.8 'L.C.' means "revolving and self - replenishing Letter of Credit".



A handwritten signature in black ink that reads "Rakesh".

A handwritten signature in black ink above a blue rectangular stamp. The stamp contains the text "S.E. (M.P.A.)", "U.P.P.C.L.", "Shakti Bhawan Extn.", and "Lucknow".

1.9 'Bill' means a bill raised, that includes all charges to be paid by DISCOM with respect to sale of Power by the Generating Plant to DISCOM.

1.10 'STU' means State Transmission Utility.

1.11 'TOD' means "Time of day", for the purpose of Metering.

1.12 'UPERC' means the U.P. Electricity Regulatory Commission.

1.13 'Wheeling' means the operation whereby the distribution system of a distribution licensee is used by another person for the conveyance of electricity on payment of charges to be determined under section 62 of the Electricity Act 2003.

1.14 "UPERC (Captive and Non-Conventional Energy Generating Plants) Regulations, 2009" shall mean in short "CNCE Regulations, 09"; as amended from time to time.

2. POWER PURCHASE, SALE

2.1 DISCOM shall accept and purchase upto 40 MW of power made available by the Generating Plant's Bagasse based generation in accordance with the terms and conditions of this Agreement, at the rate specified for such plant in Schedule II of "CNCE Regulations, 09"; as amended from time to time and mentioned hereunder :-

Bagasse -Tariff (Total Cost : Rs. /KWH)					
Year of Commissioning	FY-09-10	FY-10-11	FY-11-12	FY-12-13	FY-13-14
FY-09-10	4.21	4.24	4.29	4.34	4.40
FY-10-11		4.39	4.43	4.47	4.53
FY-11-12			4.57	4.61	4.67
FY-12-13				4.76	4.81
FY-13-14					4.96

Note :

- As the Power Generating Plant is scheduled for commissioning by 02-04-2014 (FY14-15), the power purchase rates as determined by UPERC under new Regulation shall be applicable.
- In the event of early commencement of supply of power upto 15MW in FY(13-14) by partial commissioning with one(1) Boiler, the weighted average tariff will be applicable in respect to the phased out contracted capacities of 15MW and 25MW. However if supply of Power is delayed, the tariff corresponding to the scheduled commissioning Year shall only be admissible.

Except for Income Tax, all other taxes, duties and other levies imposed by the Central and/or State Government or other local authorities directly relating to generation shall be payable by DISCOM on production of necessary supporting documents by the Generating Plant, while those relating to sale of electricity, shall be borne and payable by DISCOM. (Explanation: The price as per Schedule II of the "CNCE Regulations,09"; shall apply only in the event of generation of power by using non conventional or renewable fuel for generating power. In case conventional fuel is used, the tariff shall be as per Schedule I of the "CNCE Regulations, 09".)

2.2 The rate applicable for supply of electricity by DISCOM to the Generating Plant shall be as per the tariff determined by the Commission under appropriate 'Rate Schedule of Tariff' for the consumer category determined on the basis of the total load requirement of the plant and billing done in the manner as specified by the Commission in the Regulations.

2.3 The provisions set out in Annexure-II shall govern the Sale and accounting for power purchased by DISCOM.



[Handwritten signature]

[Handwritten signature]
- C.E. (P.P.A.)
U.P.P.C.L.
Shakti Bhawan

2.4 The Generating Company shall abide by the provisions of the Act, Rules, Codes, Regulations, Orders and Directions of the appropriate Authority / Commission issued from time to time regarding generation and evacuation of electricity.

2.5 The generating company agrees to bank energy to the extent as per prevalent Regulation and DISCOM agrees to allow withdrawal of the banked energy during the time specified by the Commission as per Regulation.

2.6 The provisions of Banking and wheeling of electricity shall be as per the CNCE Regulations.

3 MAINTENANCE REQUIREMENT OF THE GENERATING PLANT

3.1 The Generating Plant's annual maintenance schedule shall normally be from May to September. The Generating Plant shall inform DISCOM and the STU regarding the Maintenance schedule in accordance with provisions of the UP Electricity Grid Code as revised by the Commission from time to time.

3.2 Environmental Clearance and compliance of environmental standards shall be the sole responsibility of the generating plant.

4. SUPPLY SCHEDULE

The Generating Plant shall furnish to DISCOM and the State Transmission Utility (STU) or State Load Despatch Centre (SLDC), as the case may be, a day ahead Supply Schedule, and other information, as required in the CNCE Regulations and UP Electricity Grid Code as amended from time to time or provisions of any other regulation, code, order or direction in that regard or as desired otherwise.

5. BILLING PROCEDURE AND PAYMENTS

5.1 DISCOM shall raise monthly bill for electricity purchased by the Generating Plant as per its normal billing cycle after taking into account energy withdrawn from the banked energy and maximum recorded demand in the manner as specified by the Commission in the CNCE Regulations and such bill shall be payable within the time period stipulated in the General Conditions of Tariff.

5.2 The Generating Plant shall raise monthly bill based on the monthly joint meter reading in the Bill Meter at the grid substation 132/33 KV Babrala as certified by DISCOM and in such cases, energy accounting and billing shall be done by the Generating Plant in association with the concerned Distribution Licensee.

The State Load Despatch Centre shall do energy accounting and billing and the same shall be communicated to the utilities interacting with the grid as per the scheme framed by SLDC in pursuance of the provisions of UPERC Regulations.

5.3 The Monthly Bill raised by the Generating Plant shall be delivered to DISCOM at its designated office on or before the fifth (5th) working day of the following month hereinafter called the Monthly Bill date.

5.4 DISCOM shall make full payment against such Monthly Bills to the Generating Plant within thirty (30) working days of the receipt of the Monthly Bill through irrevocable revolving & self-replenishing letter of credit of a value equal to the billable amount opened with a public sector bank in favour of the Generating Plant or through any other mode. The L.C. opening and maintenance charges shall be borne by the Distribution Licensee. The L.C. shall cover the average monthly billing for units indicated in the supply schedule furnished under para 4 above for the particular calendar quarter. The LC shall be updated by 5th working day of the calendar quarter.

5.5 A rebate of 2% on the billed amount shall be allowed for payment made through LC within one month of the date of billing and for default in payment beyond



A handwritten signature in black ink that reads "Raaboh".

A handwritten signature in black ink over a blue official stamp. The stamp contains the text "S. (P.P.A.)", "U.P.P.C. L: 4", and "Shakti Bhawan Extn. Lucknow".

two months from the date of billing, a surcharge at the rate of 1.25 percent per month or part thereof shall be levied on the billed amount. Format of the Monthly Bill to be raised by the Generating Plant is given in Annexure III attached hereto and made a part of this agreement.

If the payment is made by a mode other than through LC but within a period of one month of presentation of bill by the generating company, a rebate of 1 percent shall be allowed. However, a surcharge at the rate of 1.25 percent per month of part thereof shall be levied on the billed amount in case of default in payment beyond two months from the date of billing.

5.6 The bills raised by the Generating Plant shall be paid in full subject to the conditions that:-

- (i) There is no apparent arithmetical error in the bill(s).
- (ii) The bill(s) is/are claimed as per tariff referred to in Para 2 of this agreement.
- (iii) They are in accordance with the energy account referred to in Para 14 of this agreement.

5.7 In case of any dispute regarding the bill raised by the Generating Plant, DISCOM shall file a written objection with the Generating Plant within fifteen days of receipt of the bill giving full particulars of the disputed item(s), with full details/data and reasons of dispute and amount disputed against each item. The Generating Plant shall resolve the above dispute(s) with DISCOM within 30 days.

5.8 In case, the dispute is not resolved within 30 days as provided in para 5.7 above, and in the event it is decided to proceed with the Arbitration as provided in para 23 of this agreement, then DISCOM shall pay 100% of the disputed amount forthwith and refer the dispute for arbitration as provided in this agreement. The amount of excess / shortfall with respect to the said disputed amount on final award of arbitration shall be paid / adjusted; but in case of excess, the adjustment shall be made with interest at rate 1.25% per month from the date on which the amount in dispute was refundable by the generating company to DISCOM.

6. PARALLEL OPERATIONS

Grid substation 132/33 KV Babrala owned by STU shall allow the Generating Plant to interconnect its facility and operate in parallel with STU system, subject to the provisions of this Agreement, Electricity Act, 2003 and the UP Electricity Grid Code as amended from time to time.

7. GENERATION FACILITIES OWNED AND OPERATED BY THE GENERATING PLANT

7.1 The Generating Company shall own, install, operate, and maintain the generating plant equipments and associated dedicated transmission line (subject to provisions mentioned elsewhere in this Agreement) described in Annexure I. The Generating Plant shall follow such operating procedures on its side of the electric interconnection with STUs system, as are consistent with applicable laws, rules and regulations, the terms and conditions of this Agreement, provisions of the UP Electricity Grid Code, and other related guidelines, if any, issued by UPERC, SLDC, DISCOM, STU .

7.2 In the event, any other non-conventional / renewable fuel or fuels are used by the Generating Plant to supplement Bagasse the fuel linkage shall be the responsibility of the Generating Plant. No pass through of cost on account of this shall be permitted.



A handwritten signature in black ink, appearing to read "Rakesh".

A handwritten signature in black ink, appearing to read "Shakti Bhawan Extd.". Below the signature is a blue stamp with the text "CB (P.P.A.) U.P.P.C.L. Shakti Bhawan Extd. Lucknow".

5

7.3 All electrical equipments shall be installed in compliance with the requirements of the Director of Electrical Safety, Government of Uttar Pradesh and safety specifications of the Central Electricity Authority (CEA) under section 53 of the Electricity Act, 2003.

7.4 The Generating Plant further agrees to make no material changes or additions to its facility, which may have an adverse effect on STU system, or amend the single-line diagram, relay list and/or trip scheme given in Annexure I, without prior written consent. DISCOM agrees that such consent shall not be unreasonably withheld or given without the prior permission of STU.

7.5 Without prejudice to the foregoing, the Generating Plant shall install, operate, and maintain its facility in accordance with accepted prudent utility practices in the electricity industry. The Generating Plant's operation and Maintenance schedules and staffing shall be adequate to meet such standards at all times.

7.6 DISCOM/STU shall follow such operating procedures on its side of the electric interconnection point with the Generating Plant, as required to receive Power from the Generating Plant's facility, without avoidable interruptions or adverse consequences on the Generating Plant, and consistent with applicable laws, rules and regulations, and the terms and conditions of this Agreement.

8. INTERCONNECTION FACILITIES

8.1 Power from the Generating Plant shall be transmitted at 132 KV through a 132 KV line from the Generating plant located at Vill & P.O –Rajpura ,Babrala Hasanpur Road , Distt-Sambhal. The power so transmitted shall be interfaced with 132KV grid sub-station located at. Babrala owned by STU.

8.2 The cost of the dedicated transmission line from the Generating Plant to the designated grid sub-station STU and the cost of interfacing at both ends (the Generating Plant and grid substation) including work at the STU Sub-Station, cost of bay, tie- line, terminal equipments and associated synchronizing equipments, shall be borne by the Generating Plant.

8.3 The construction of evacuation system for connecting plant with grid substation shall be the responsibility of generating company. The generating Company shall construct transmission line under supervision of UP Power Transmission Corporation and Bay at substation will be constructed by UP Power Transmission Corporation. The supervision charges and Bay construction charges will be deposited by the Generating Company to UP Power Transmission Corporation as per the deposit works rules.

(Explanation: The technical and other specifications of the work shall be finalized with STU's approval and be in accordance with standards and specifications laid for construction of 132 KV or higher voltage line . The lines constructed for the evacuation of power from the Generating Plant, shall not be used for transmitting/supplying power for any other purpose, without a mutual agreement between the Generating Plant and DISCOM /STU and without prior approval of UPERC. Existing transmission/distribution lines of STU may be utilized for evacuation of power from the Generating Plant to the Grid sub-station, on the basis of a mutual agreement between the Generating Plant and STU with the approval of UPERC. Notwithstanding the above, the work of interfacing at STU Sub-Station will be done by STU.

8.4 The Generating Plant shall be responsible for the Maintenance of equipment at the generating end.



A handwritten signature in black ink, appearing to be "Rajesh", written over a horizontal line.

A handwritten signature in black ink, appearing to be "W. J. Singh", written over a horizontal line.

6
CE (P.P.A.)
U. P. P. C. L.
Shakti Bhawan Extn
Lucknow

8.5 For maintenance of Transmission line and bay , either the Generating company will undertake the maintenance work by their own or in case the Generating company opts to maintain the same through UP Power Transmission Corporation , they may entrust the maintenance work to them on the terms mutually agreed with Transmission Corporation .

8.6 Any work to be done by the Generating Plant shall be taken up only with a specific approval and on the basis of approved drawings and specifications and in compliance with the safety requirements as per the UP Electricity Grid Code. On the completion of work, final approval shall be obtained from DISCOM/ STU before charging the line. The Generating Plant would obtain all statutory clearances/approvals required for this purpose.

8.7 The Generating Plant shall consult DISCOM/STU on the scheme of protection of the interconnecting line/s and the facilities at both ends, and accordingly provide the equipment at both ends. The protection system, installed by the Generating Plant, shall be checked by DISCOM/STU.

8.8 Without limiting the foregoing, the Generating Plant and STU shall, operate and maintain the interconnection and parallel operation facility in accordance with accepted good engineering practices in the electricity industry and the UP Electricity Grid Code as amended from time to time and directions of Director Electrical Safety (GOUP) and safety requirements as specified by the Authority under section 53 of the Act.

8.9 The interconnection facilities, to be provided by the Generating Plant are set forth in Annexure IV attached hereto and made a part hereof.

9. PROTECTIVE EQUIPMENT & INTERLOCKING

9.1 The interconnection facilities shall include necessary protective equipment and interlocking devices, which shall be so coordinated that any malfunctioning or abnormality in the generators or in the bus of the Generating Plant shall not adversely reflect on or affect STU grid system. In event of any malfunctioning or abnormality, the system shall be designed to ensure that the Generating Plant's breaker trips first to protect the equipment. Prior to adopting it the Generating Plant shall obtain approval of STU for the protection logic of the generator system and the synchronisation scheme.

9.2 The Generating Plant shall install necessary equipment to eliminate feeding of reverse power from the Grid to the Generating Plant's system in absence of any agreement for purchase of power with DISCOM.

10. TECHNICAL ASSISTANCE BY DISCOM & GENERATING PLANTS RESPONSIBILITY

10.1 On request, DISCOM, in consultation with STU, shall provide reasonable technical assistance to the Generating Plant in preparing the design and specifications of the required facilities and for laying down the standard operating and maintenance procedures. The Generating Plant, however, shall be responsible for procurement, installation, testing, maintenance and operation of the electrical system installed in the Generating Plant's premises.

10.2 Notwithstanding the above, DISCOM shall not be responsible for any damage caused to the electrical system/generating set of the Generating Plant, on account of errors or defects in the design, procurement, installation, testing, maintenance and operation of the system.

11. ARRANGEMENTS AT THE POINT OF SUPPLY

The Generating Plant shall make all arrangements for paralleling the set/s with STU and in consultation with and to the satisfaction of STU, subject to the approval of the



U.P. (P.P.A.)
U. P. P. C. L.
Shakti Bhawan Bsta. 7

Director of Electrical Safety, Government of Uttar Pradesh and safety specifications of the Central Electricity Authority (CEA) under Section 53 of the Electricity Act, 2003.

12. SYNCHRONISATION

12.1 The Generating Plant shall synchronise its power generating set in consultation with the Executive Engineer, Electricity Transmission Division-I, UPPTCL (in-charge of the Babrala sub-station of STU) and as per provisions of the UP Electricity Grid Code as amended from time to time. The Generating Plant shall give seven (7) days prior intimation of the synchronisation programme to the Nodal Officer:

- i) when commissioning the plant for the first-time,
- ii) when commissioning after completion of the annual Maintenance programme.

12.2 DISCOM/STU shall not be responsible for the damage, if any, caused to the plant and equipment of the Generating Plant due to failure of the synchronising or the protective system provided by the Generating Plant.

13. LIASON WITH & ASSISTANCE FROM DISCOM

The Generating Plant shall closely liaise with the Nodal Officer of DISCOM and the STU and shall inform the date of commencement of delivery of power to the designated officials of DISCOM and STU one month in advance and also arrange for testing and commissioning of the protection system at least 15 days in advance. If requested by the Generating Plant, DISCOM, in consultation with STU as the case may be, shall extend assistance for testing, subject to the condition that the Generating Plant shall pay the charges for such assistance to DISCOM, if so indicated by the concerned Testing Division of DISCOM. This charge shall be reasonable and be based on the man-hours devoted by DISCOM staff and their usual levels of remuneration, and DISCOM equipment used.

14. METERING

14.1 The Generating Plant shall supply two identical sets of ABT compliant meters, with the facility for downloading data to measure the quantity and time details of the Power exported from and imported by the Generating Plant, conforming to the specifications approved by STU, along with all necessary associated equipments. These meters shall be installed and maintained by DISCOM/STU. These meters shall be installed at the grid substation of STU at the interconnection point. One set of export/import meters shall be termed as Bill Meter and other set will serve as the Check Meter. The complete metering system consisting of meters, Current Transformers & Potential Transformers shall conform to the 0.2 accuracy class, individually and collectively, and shall comply with the technical standards, accuracy and calibration requirements of the Indian Electricity Rules and the specifications of the Bureau of Indian Standard and the guidelines of CEA for installation of meters.

14.2 The joint meter readings shall be recorded in the format given in Annexure V & VI.

14.3 The Meter/Metering system shall be properly sealed and made pilfer proof, to the satisfaction of both parties.

14.4 DISCOM (in consultation with STU if the generating plant is connected to the sub-station of STU) shall, test all the metering equipment for accuracy, in the presence of a representative of the Generating Plant, if the Generating Plant so elects, at least once every year while the agreement is in force. Either party may, however, elect to get the meters tested at any time they so desire, at their own cost, in the presence of the other party.



Rakesh

[Signature]
O.P. (P.P.A.)
U.P. P. C. L. 8
Shakti Bhawan Extn.
Lucknow.

14.5 DISCOM/STU's designated representative and the representative of the Generating Plant shall jointly certify the meter test results. After every testing all metering equipment and the Metering system shall be securely sealed jointly by the representatives of DISCOM and the Generating Plant.

14.6 The reading and testing of meters and associated equipment shall be in accordance with accepted good engineering practices in the electricity industry.

14.7 Calibration, inspection and testing of meters and the associated equipment shall be the responsibility of DISCOM, who shall bear the related costs.

14.8 Meter readings shall be taken jointly by parties as indicated below:-

(i) DISCOM side- Executive Engineer (Distribution) , as authorized by DISCOM and Executive Engineer(Transmission) as authorized by STU.

(ii) Generating Plant side - Authorised representative of the Generating Plant.

14.9 The reading of the Bill Meter shall form the basis for the energy account, provided that the magnitude (i.e. absolute value) of the difference between the Check and Bill Meter reading is within one percent of the Bill Meter reading.

14.10 If in any month the readings of the Bill Meter and Check Meter are found to be doubtful or beyond the permissible 1% deviation indicated above, both sets of meters shall be checked and calibrated in the presence of authorised representatives of both the parties. Corrections shall be made, if required, on the basis of the error detected during this process, in the Monthly Bill for the period between the previous meter readings and the date and time from which accurate readings become available through replacement or re-calibration. These corrections shall be full and final for the Bill of that month.

14.11 During the period of checking and calibration of both meters simultaneously another export and import meter duly calibrated would be installed by DISCOM(in consultation with STU if the plant is connected to the s/s of STU). For this purpose, one spare set of meters would be required to be available with the generating plant at all times.

14.12 If the Bill Meter is found to be defective, and the Check meter is found to be accurate then the reading from the latter shall be used for billing purpose and the Bill meters would be re-calibrated and re-installed or replaced by duly tested and calibrated meters, as necessary. Where error in the Check Meter is indicated beyond permissible limit but there is no error in the Bill Meter, monthly energy account would be prepared on the basis of the Bill Meter reading and the Check Meter shall be immediately re-calibrated and re-installed or replaced as necessary. If both meters are found to be defective, then the Bill will be revised on the basis of the in-accuracy discovered in the testing. The M.R.I. output from the meters shall be considered an authentic document for verification.

14.13 Metering at generating terminal of each unit of the generating plant shall be ensured as per the guidelines of the Central Electricity Authority.

15. ACCEPTANCE AND APPROVAL OF DISCOM

DISCOM's acceptance or approval for equipment, additions or changes to equipment, and their operational setting etc., would be required. Such acceptance/approval shall not be unreasonably withheld and shall be based on DISCOM's existing policies and practices after the clearance of STU is obtained.

16. COMMISSIONING OF GENERATION FACILITIES

The Generating Plant shall commission the generation facility and synchronise it with STU system grid by 02-04-2014. Consequent to partial commissioning with one boiler, the power upto 15MW may be supplied in FY (13-14) and thereafter total power



A handwritten signature in black ink, appearing to read "Rakesh".

A handwritten signature in black ink, appearing to read "Shakti Birendra Extn.", with a blue official stamp below it. The stamp contains the text "S.E. (P.P.A.)", "D.P.P.C. Lt.", and "Shakti Birendra Extn.".

upto 40 MW will be supplied after commissioning of second boiler by the aforesaid scheduled date.

In case, the plant is commissioned beyond the said dates of commissioning, the tariff applicable for sale of electricity from the plant to DISCOM shall be the rate corresponding to the year in which the Commissioning of the plant was agreed to as above in case of delay on whatsoever account. However, in the case of delay in Commissioning of the plant for reasons beyond the reasonable control of the generating company, the provisions of para 26 of the Agreement shall apply.

17. CONTINUITY OF SERVICE

17.1 The supply of electricity by the Generating Plant shall be governed by instructions from the state load despatch centre, as per the provisions of the UP Electricity Grid Code as amended from time to time. However, DISCOM/ STU may require the Generating Plant to temporarily curtail or interrupt deliveries of power only when necessary in the following circumstances: -

- (i) Repair and/or Replacement and/or Removal of STU equipment or any part of its system that is associated with the Generating Plant's facility; and/or
- (ii) Endangerment of Safety: If STU determines that the continued operation of the facility may endanger the safety of STU personnel or integrity of STU electric system, or have an adverse effect on the provision of electricity to DISCOM/ STU , other consumers/customers; and/or
- (iii) Force Majeure Conditions as defined in para 26.

Note: Any necessary inspection, investigation or maintenance of STU equipment or any part of its system that is associated with the Generating Plant's facility shall be planned by STU to coincide with the scheduled outage of the Generating Plant's generation system;

17.2 Before disconnecting the Generating Plant from STU system, DISCOM/STU shall, except in the case of an emergent situation, give advance intimation to the Generating Plant through telephone/wireless or through other means of communication along with reasons for disconnection, and the likely period of the disconnection. However, subsequent to disconnection, DISCOM/STU shall immediately notify the Generating Plant by telephone and confirm in writing the reasons for, and the likely period of, disconnection. During the period so notified DISCOM shall not be obligated to accept or pay for any power from the Generating Plant.

17.3 In any such event as described above, DISCOM/STU shall take all reasonable steps to minimise the frequency and duration of such interruptions, curtailments, or reductions.

17.4 DISCOM/STU shall avoid scheduling any event described in 17.1 above, to the extent reasonably practical, during the Generating Plant's operations. Where the scheduling of such an event during the Generating Plant's operations cannot be avoided, DISCOM /STU shall provide the Generating Plant with fifteen days advance notice in writing to enable the Generating Plant to cease delivery of Power to DISCOM at the scheduled time.

17.5 In order to allow the Generating Plant's facility to remain on-line and to minimise interruptions to Generating Plant operations, the Generating Plant may provide automatic equipment that will isolate the Generating Plant's facility from STU's system during major system disturbances.



A handwritten signature in black ink, appearing to read "Rakarsh".

A handwritten signature in black ink. Below it is a blue ink stamp that reads "S.E. (P.P.A.)", "U.P.P.C.L.", "Shakti Bhawan Extn.", and "Lucknow". There is a handwritten number "10" next to the stamp.

18. **DAILY/MONTHLY/ANNUAL REPORT**

The Generating Plant shall submit daily/monthly/annual and other reports on the format, and as per the procedure, specified in the UP Electricity Grid Code as amended from time to time and under the CNCE Regulations or as desired by the STU and DISCOM.

The Generating Plant shall submit six monthly progress report during the construction of the plant to the distribution licensee. A Completion report shall be filed by with the Commission within 60 days of commissioning of the plant.

19. **CLEARANCES, PERMITS AND LICENSES**

The Generating Plant shall obtain, at its own expense, all authorisations, permits, and licences required for the construction, installation and operation of the Generating Plant's facilities and any interconnection facilities, including but not limited to, rights-of-way or easements. DISCOM shall provide reasonable assistance, including permissions, approvals and clearances from STU, to the Generating Plant if so requested by the Generating Plant.

20. **DURATION**

20.1 Unless terminated by default, this agreement shall be valid till the expiry of 20 years from the date of commissioning of the plant.

20.2 The agreement may be renewed or extended for such period as may be mutually agreed between the Generating Company and DISCOM on expiry of initial term of 20 years.

21. **EVENTS OF DEFAULT AND TERMINATION**

21.1 The occurrence of any of the following events at any time during the term of this agreement shall constitute a default by the Generating Plant:

(a) Failure on the part of the Generating Plant to use reasonable diligence in operating, maintaining, or repairing the Generating Plant's facility, such that the safety of persons and property, DISCOM's equipment, or DISCOM's service to others is adversely affected; or

(b) Failure or refusal by the Generating Plant to perform its material obligations under this agreement; or

(c) Abandonment of its interconnection facilities by the Generating Plant or the discontinuance by the Generating Plant of services covered under this agreement, unless such discontinuance is caused by force majeure, or an event of default by DISCOM, or

(d) Failure by the Generating Plant to abide by all statutory provisions, rules, regulations, directions and conditions for installation, operation, and supply of power and maintenance of co-generation units etc., enforced from time to time by the Union/State Government, UPERC or other empowered authorities, including compliance with the UP Electricity Grid Code or as amended from time to time, or

(e) Failure by the Generating Plant to pay DISCOM any amount payable and due under this agreement within ninety (90) working days of the demand being raised.

21.2 The occurrence of any of the following at any time during the term of this agreement shall constitute a default by DISCOM: -

(a) Failure to pay to the Generating Plant any amount payable and due under this agreement within ninety (90) working days of the receipt of the bill/monthly purchase bill; or



A handwritten signature in black ink, appearing to read "Raabak".

A handwritten signature in black ink, appearing to read "Shakti Bhawan Bata". Below it is a blue official stamp with the text "S.P. (P.P.A.)", "U. P. P. C. L. 11", "Shakti Bhawan Bata", and "Lucknow." arranged in a rectangular layout.

- (b) Failure to use reasonable diligence in operating, maintaining, or repairing DISCOM's interconnecting facilities, such that the safety of persons or property in general, or the Generating Plants equipment or personnel are adversely affected; or
- (c) Failure or refusal by DISCOM to perform its material obligations under this agreement; or
- (d) Abandonment of its interconnection facilities by DISCOM or the discontinuance by DISCOM of services covered under this agreement, unless such discontinuance is caused by force majeure or an event of default by the Generating Plant.
- (e) Except for failure to make any payment due, within ninety (90) working days of receipt of the monthly purchase bill, if an event of default by including non-payment of bills either party extends beyond a period of ninety (90) working days after receipt of written notice of such event of default from the non-defaulting party, then the non-defaulting party may, at its option, terminate this agreement by delivering written notice of such termination to the party in default.
- (f) Failure by either DISCOM or the Generating Plant to exercise any of its rights under this agreement shall not constitute a waiver of such rights. Neither party shall be deemed to have waived the performance of any obligation by the other party under this agreement, unless such a waiver has specifically been made in writing and approved by the UPERC.

21.3 DISCOM reserves the right to terminate this agreement upon one months notice to the Generating Plant, if the Generating Plant's facility fails to commence production of electric power within three months from the planned commercial operation date shown in Annexure 1.

22. COMMUNICATION

In order to have effective co-ordination between DISCOM and the Generating Plant, a designated official shall be kept on duty round the clock by the Generating Plant and DISCOM in their respective premises, with information to each other about the name, location, telephone number etc., of the official. Without prejudice to discharge of their rightful duties by others, this duty official shall take necessary action on receiving information about developments from the other party. The Generating Plant shall provide reliable and effective communication through wireless/hotline etc., between the Generating Plant & the interconnecting sub-station of STU and between the Generating Plant and the SLDC. The Generating Plant shall make provision for an RTU for remote monitoring of voltage, current and other related electrical parameters, as may be required by the STU.

23. DISPUTES AND ARBITRATION

In the event of any dispute or difference between the parties concerning performance of this agreement and/or the rights and liabilities of the parties in respect of which a procedure for the resolution is not otherwise provided for in this agreement the following provisions shall apply:

- a) Executive Engineer (Distribution) as designated on behalf of DISCOM, and the authorised representative of the Generating Plant would be empowered to indicate explicitly the nature and material particulars of the dispute/dissatisfaction and the relief sought, and serve notice thereof on the other, with copy to the DISCOM's Superintending Engineer (Distribution) as designated by DISCOM.



A large, stylized handwritten signature in black ink, appearing to be "Rajesh".

A handwritten signature in black ink above a blue official stamp. The stamp contains the text "S.E. (P.P.A.)", "U.P.P.C.I.", and "Shakti Bhawan". The number "12" is written to the right of the stamp.

12

b) On receiving such information, the Superintending Engineer of the Circle of DISCOM shall be required to personally meet the authorised representative of the Generating Plant and the Executive Engineer of the concerned Division, at his own office, separately and/or together, within 15 (Fifteen) days of the date of receipt of such notice, and attempt in good faith to resolve the dispute to the mutual satisfaction of the two parties, within the stipulations dictated by the letter and spirit of the agreement.

c) If the dispute is not resolved by way of a settlement being arrived at and duly signed by each of the above officers within (30) thirty days of the date of receipt of the notice described in clause (a) above, the matter may be referred by either or both the above designated officers of the two parties to the DISCOM's Chief Engineer who has direct supervisory jurisdiction over the Superintending Engineer referred to above, with information to the Chief Executive of the Generating Plant. Within 15 days of receipt of such notice, the Chief Engineer and the Chief Executive of the Generating Plant would be required to meet at the formers office and endeavour to settle the dispute within a further period of (30) thirty days. i.e. within a total period of 45 (forty Five) days from the initial date of receipt of the notice by the DISCOM.

d) If the said dispute / dissatisfaction remains unresolved, either party can file a petition before UPERC, whose decision will be final and binding on both the parties. UPERC shall be empowered to determine the exact nature and modalities of the procedure to be adopted in resolving the matter.

24. INDEMNIFICATION

24.1 The Generating Plant shall indemnify, defend, and render harm free, DISCOM, its members, directors, officers, employees and agents, and their respective heirs, successors, legal representatives and assignees, from and against any and all liabilities, damages, costs, expenses (including attorneys fees), losses, claims, demands, action, causes of action, suits, and proceedings of every kind, including those for damage to property of any person or entity (including the Generating Plant) and/or for injury to or death of any person (including the Generating Plant's employees and agents), which directly or indirectly result from or arise out of or in connection with negligence or wilful misconduct of the Generating Plant.

24.2 DISCOM shall indemnify and render the Generating Plant, its directors, officers, employees and agents, and their respective heirs, successors, legal representatives and assignees harmless from and against any and all liabilities, damages, costs, expenses (including outside attorneys fees), losses, claims, demands, actions, causes of action, suits and proceedings of every kind, including those for damage to the property of any person or entity (including DISCOM) and/or injury to or death of any person (including DISCOM's employees and agents), which directly or indirectly result from or arise out of or in connection with negligence or wilful misconduct by DISCOM.

25. ASSIGNMENT

This Agreement may not be assigned by either DISCOM or the Generating Plant without the consent in writing of the other party, except that either party may assign its rights under this Agreement, or transfer such rights by operation of law, to any corporation with which or into which such party shall merge or consolidate or to which such party shall transfer all or substantially all of its assets; provided that such assignee or transferee shall expressly assume, in writing, delivered to the other party



A large, stylized handwritten signature in black ink.

A handwritten signature in black ink, followed by a blue official stamp. The stamp contains the text "S.E. (P.P.A.)" and "U.P.P.C.L." in a circular arrangement. To the right of the stamp is the number "13". Below the stamp, there is some faint, partially legible text that appears to be "Shakti B..." and "Lucknow".

to this Agreement, all the obligations of the assigning or transferring party under this Agreement.

26. **FORCE MAJEURE**

26.1 If any party hereto is wholly or partially prevented from performing any of its obligations under this agreement by reason of or due to lightning, earthquake, riots, fire, floods, invasion, insurrection, rebellion, mutiny, tidal wave, civil unrest, epidemics, explosion, the order of any court, judge or civil authority, change in State or National law, war, any act of God or a public enemy, or any other similar or dissimilar cause reasonably beyond its exclusive control and not attributable to its neglect, then in any such event, such party shall be excused from whatever performance is prevented by such event, to the extent so prevented, and such party shall not be liable for any damage, sanction or loss for not performing such obligations.

26.2 The party invoking this clause shall satisfy the other party of the occurrence of such an event and give written notice explaining the circumstances, within seven days to the other party and take all possible steps to revert to normal conditions at the earliest.

26.3 Any payments that become/have become due under this agreement shall not be withheld, on grounds of force majeure conditions developing.

27. **AUTHORITY TO EXECUTE**

Each respective party represents and warrants as follows: -

(a) Each party has all necessary rights, powers and authority to execute, deliver and perform this agreement.

(b) The execution, delivery and performance of this agreement by each respective party shall not result in a violation of any law or result in a breach of any government authority, or conflict with, or result in a breach of, or cause a default under, any agreement or instrument to which either respective party is a party or by which it is bound.

(c) No consent of any person or entity not a party to this agreement, including any governmental authority, is required for such execution, delivery and performance by each respective party. All necessary consents have been either obtained or shall be obtained in the future as and when they become due.

28. **LIABILITY AND DEDICATION**

28.1 Nothing in this agreement shall create any duty, standard of care, or liability to be discharged by any person not a party to it.

28.2 No undertaking by one party to the other under any provision of this Agreement shall constitute the dedication of that party's system or any portion thereof to the other party or to the public; or affect the status of DISCOM as a public utility or constitute the Generating Plant or the Generating Plant's facility as a public utility.

29. **NODAL AGENCY OF DISCOM**

The Executive Engineer (Distribution) as designated by DISCOM shall act as a nodal agency for implementing this Agreement.



A handwritten signature in black ink, appearing to be "Rakesh", written over a horizontal line.

A handwritten signature in black ink, appearing to be "Shakti Bhawan", written over a horizontal line. Below the signature is a blue official stamp that reads "CE. (P.P.A.) U.P.P.C. L. 14 Shakti Bhawan Extra Lucknow.".

30. **AMENDMENTS**

Any waiver, alteration, amendment or modification of this Agreement or any part hereof shall not be valid unless it is in writing, signed by both the parties and approved by UPERC.

31. **BINDING EFFECT**

This Agreement shall be binding upon and inure to the benefit of the parties hereto and their respective successors, legal representatives, and permitted assignees.

32. **NOTICES**

Any written notice provided hereunder shall be delivered personally or sent by registered post, acknowledgement due, or by courier for delivery on written receipt, with pre-paid postage or courier charges, to the other party, at the following address:

THE Executive Engineer (Distribution)

Chandausi ..

GENERATING PLANT:

-M/s DSM Sugar Rajpura

Vill & PO- Rajpura

Distt- Sambhal.

Notice delivered personally shall be deemed to have been given when it is delivered at the office of the Generating Plants or to the office of the Executive Engineer (Distribution) of DISCOM, as the case may be, at address set forth above and actually delivered to such person or left with and received by a responsible person in that office. Notice sent by post or courier shall be deemed to have been given on the date of actual delivery as evidenced by the date appearing on the acknowledgement of delivery.

Any party to this agreement may change its address for serving a written notice, by giving written notice of such change to the other party.

33. **EFFECT OF SECTION AND ANNEXURE HEADINGS**

The headings or titles of the various sections and Annexures hereof are for convenient reference and shall not affect the construction or interpretation of any provision of this Agreement.

34. **NON-WAIVER**

No delay or forbearance by either party in the exercise of any remedy or right will constitute a waiver thereof, and the exercise or partial exercise of a remedy or right shall not preclude further exercise of the same or any other remedy or rights.

35. **RELATIONSHIP OF THE PARTIES**

Nothing in this Agreement shall be deemed to constitute either party hereto as partner, agent or representative of the other party or create any fiduciary relationship between the parties.

36. **ENTIRE AGREEMENT**

This agreement constitutes the entire understanding and agreement between the parties.



A handwritten signature in black ink that appears to read "Raabon".

A handwritten signature in black ink above a blue official stamp. The stamp contains the text "CE (P.P.A.) U.P.P.C.L. Shakti Bhawan Extn. Lucknow." and the number "15" to the right.

37. **GOVERNING LAW**

This agreement shall be governed by and construed in accordance with the laws applicable in the State of Uttar Pradesh

38. **NO PARTY DEEMED DRAFTER**

The parties agree that no party shall be deemed to be the drafter of this Agreement and that in the event this Agreement is ever construed by arbitrators, or by a court of law, no inference shall be drawn against either party on account of this Agreement or any provision hereof being drafted by them. DISCOM and the Generating Plant acknowledge that both parties have contributed substantially and materially to the preparation of this Agreement.

39. **APPROVALS**

Wherever approvals from either DISCOM or the Generating Plant are required in this Agreement, it is understood that such approvals shall not be unreasonably withheld.

40. **ANNEXURES**

ANNEXURES I to X - WOULD FORM PART OF THIS AGREEMENT.

41. **STANDARD FOR DECISION MAKING**

41.1 All operational decisions or approvals that are to be made at the discretion of either DISCOM or the Generating Plant, pursuant to the terms of this agreement, including specifications and design criteria etc., shall be made or performed according to good engineering practices prevailing in the electricity industry.

41.2 Professional decisions or activities undertaken by either party for the purpose of constructing, installing, removing, maintaining or operating any facility, which may affect the operations of the other party's facility or facilities, shall be made or performed according to good engineering practices prevailing in the electricity industry.

The above PPA is subject to approval by UPERC.

IN WITNESS:

WHEREOF, UPPCL on behalf of DISCOM and the Generating Plant have executed this agreement as of the ~~23rd~~ Day of ~~Jan~~ in the year ~~2013~~.

FOR THE GENERATING PLANT:

NAME: (Raakesh Kumar)

DESIGNATION: General Manager

ADDRESS: M/s DSM Sugar Rajpura

WITNESSED BY: *Opq*

NAME: Raakesh Kumar ukachyap

DESIGNATION: manager

ADDRESS: E-3/282 H-Sector
L.P.A. Colony Kanpur Road
Lucknow



FOR DISCOM:

NAME: U.C.Pant

DESIGNATION: CE(PPA)

ADDRESS:

WITNESSED BY: *Muney*

NAME: S.P.PANDEY

DESIGNATION: SE, PPA

ADDRESS: UPPCL

ANNEXURE-I

THE GENERATING COMPANY'S GENERATION FACILITIES

1. THE GENERATING PLANT:

- a.- NAME: : M/s DSM Sugar Rajpura .
b.- LOCATION: : Near TCL Babrala
c.- CHIEF EXECUTIVE: : Vice Precedent Mr Dhan Singh
d.- CONTACT PERSON: : Vice Precedent Mr Dhan Singh
e.- MAILING ADDRESS: : DSM Sugar Rajpura
Babrala Hasanpur Road,
Village & Post Office: Rajpura,
Distt: Sambhal – 243727 (U.P.)
f.- TELEPHONE NUMBER: : 05836-239055
g.- FAX NUMBER: : 05836-239054,
h.- EMERGENCY TELEPHONE NUMBER: : 05836-239054,55
2. GENERATING EQUIPMENT: :
a.- BOILERS: : 1x70 TPH , 67 Kg/Sq cm & 1x120 TPH
67 Kg./sq.cm (proposed)
b.- TURBO-GENERATOR SETS: : 1x 40 MW ,11 KV
c.- GENERATION VOLTAGE: : Generation 11 KV and Evacuation 132 KV
KV
d.- SPEED: : 1500 RPM
e.- TYPE OF GOVERNOR: : Electronic
f.- TRANSFORMER: : 43 MVA,11 KV/ 132 KV, YN yn0
g.- FIRST SYNCHRONISATION : 02-04-2014
(INITIAL OPERATION
DATE)

Transmission Line:132KV line connecting with 132KV Sub-station of STU

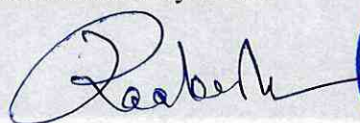
- h - COMMERCIAL OPERATION DATE: 02-04-14

3. Stipulations relating to the facilities:

3.1 For the purpose of this agreement the Generating Plant's facility includes all real estate, fixtures, and property owned, controlled, operated or managed by the Generating Plant in connection with or to facilitate generation, transmission, delivery, or furnishing of electricity or required to interconnect and deliver the electricity to STU system.

3.2 The Generating Plant shall furnish, install, operate and maintain facilities such as breakers, relays, switches, synchronising equipment, monitoring equipment, and control and protective devices as suitable for parallel operation with STU system and acceptable to DISCOM. Such facilities shall be accessible to authorised DISCOM personnel for inspection, with prior intimation to the Generating Plant

3.3 The Generating Plant shall furnish, in accordance with DISCOM/STU requirements, all conductors, service switches, fuses, meter sockets, meter and instrument transformer housings and mountings, switches, meter buses, meter panels, and similar devices required for the service connection and meter installation at STU premises. This equipment shall be installed and Commissioned by STU.






OB. (P.T.A.)
U. P. P. C. L.
Shakti Bhawan Extn.
Lucknow.

3.4 DISCOM/STU shall review and approve the design drawings and Bill of Material for the Generating Plant's electrical equipment, required to interconnect with STU system. The type of electrical equipment, the type of protective relaying equipment and the settings affecting the reliability and safety of operation of STU and the Generating Plant's interconnected system shall be approved by STU/DISCOM. DISCOM, at its option, may request witnessing operation of the control, synchronising, and protection schemes.

3.5 The Generating Plant shall provide a manual isolating device, which provides a visible break to separate the Generating Plant's facilities from STU system. Such a disconnecting device shall be lockable in the OPEN position and be readily accessible to DISCOM personnel at all times.

4. **Operating Procedures:**

4.1 The Generating Plant shall operate its plant when interconnected with the grid as per the procedure given in the UP Electricity Grid Code as amended from time to time. The overall responsibility of operation and implementation of the UP Electricity Grid Code rests with the State Load Despatch Centre and the State Transmission Utility under the provisions of the Act, 2003.

4.2 The Generating Plant's normal annual Maintenance shall be carried out from May to September.

4.3 The Generating Plant shall notify interconnecting sub station and SLDC prior to synchronising a generator on to or taking a generator off of the system. Such notification should be as far in advance as reasonably possible under the circumstances causing the action.

5. Single Line Diagram (Enclosed at Annexure -X)



A handwritten signature in blue ink is written over a rectangular blue stamp. The stamp contains the text "CE. (P.P.A.)", "U.P.P.C.L.", "Shakti Bhawan Extn.", and "Lucknow." arranged in four lines.

Annexure II

Sale and Accounting for Power

1. In case the Generating Plant is not a consumer of DISCOM, protective gear at STU Substation would be designed to ensure that reverse flow of power from STU/DISCOM's system to the Generating Plant is totally blocked out and the circuit breaker at the Substation gets opened automatically when required. However, notwithstanding this provision, if any export to the Generating Plant takes place, it would be paid for by the Generating Plant in accordance with the terms of this agreement.
2. On the first day of the Energy Account Month, the Generating Plant shall provide information in writing or Generation Schedule to SLDC and DISCOM, when ABT is implemented in the state about the quantity of Power to be wheeled by way of purchase or sale or banking, as the case may be, during the month.
3. The purchase of electricity by DISCOM shall be subject to the provisions of the Distribution Licence, CNCE Regulations & Directions of UPERC and other statutory authorities, and requirements of the State Load Despatch Centre.
4. Power accounting and Billing would be done on the basis of the section titled "Metering" in the main agreement (Clause No. 14.0)



Handwritten signature and blue rectangular stamp of U.P.P.C.L. Shakti Bhawan Extn Lucknow. The stamp contains the text 'CE (P.P.A.)', 'U.P.P.C.L.', 'Shakti Bhawan Extn', and 'Lucknow.'.

ANNEXURE III

SAMPLE MONTHLY BILL
INVOICE

Date :

For the Month of:

Monthly Purchase Bill No.

Name of Buyer: DISCOM

Address:

Town:

District:

PIN Code:

Tel. No.:

Fax:

Name of the Generating Plant:

Address:

Town:

District:

PIN Code:

Tel. No.:

Fax:

DESCRIPTION	QUANTITY	UNIT PRICE	AMOUNT
1. ENERGY SUPPLIED (KWh)	:		
2. ENERGY FOR WHEELING (KWh)	:		
3. ENERGY FOR PAYMENT (KWh) (1-2) :			
Banked Energy (Not applicable)			
1. Energy banked during the month	: -		
2. Energy balance as on preceding month	:		
3. Energy scheduled for withdrawal during the month :			
4. Banking charges	:		
5. Energy withdrawn during the month (3-4)			
6. Energy banked at the end of the month (1+2-3)	:		

OTHER CHARGES

Less/Add:

SUBTOTAL:

TOTAL DUE :

Verified by:

For Generating Plant Ltd.

For DISCOM

Authorised Signatory

Authorised Signatory



Handwritten signature in blue ink is written over a rectangular blue stamp. The stamp contains the text "CE. (P.P.A.)", "U. P. P. C. L.", and "Shakti Bhawan Extn Lucknow." arranged vertically.

ANNEXURE IV

INTERCONNECTION FACILITIES PROVIDED BY THE GENERATING PLANT

LINE BAY/S

- | | | |
|--|--|---|
| a) | STRUCTURES | : Yes, Provided |
| b) | BUS BARS, CLAMPS AND CONNECTORS | : -do- |
| c) | GROUNDING GRID | : -do- |
| d) | ISOLATORS | : -do- |
| e) | CURRENT TRANSFORMERS | : -do- |
| f) | CIRCUIT BREAKERS | : -do- |
| g) | CONTROL CUBICLES | : -do- |
| h) | CONTROL CABLING | : -do- |
| i) | AC / DC POWER SUPPLY | : -do- |
| j) | COMMUNICATION EQUIPMENT | : -do- |
| k) | SYNCHRONISATION & PROTECTION FACILITIES | |
| l) | AUTOMATIC VOLTAGE REGULATOR | : Yes Provided |
| m) | AUTO SYNCHRONISATION UNIT | : -do- |
| n) | CHECK SYNCHRONISATION RELAY | : -do- |
| PROTECTION FOR INTERNAL FAULTS: | | |
| a) | DIFFERENTIAL GENERATOR | : - |
| b) | DIFFERENTIAL UNIT TRANSFORMER | : Yes Provided |
| c) | RESTRICTED EARTH FAULT | : -do- |
| d) | STATOR EARTH FAULT | : - |
| e) | ROTOR EARTH FAULT | : -do - |
| f) | INTER-TURN FAULT | : Taken care of by the buchholz relay on transformer. |
| g) | OVER VOLTAGE | : Yes Provided |
| h) | LOSS OF EXCITATION | : - |
| i) | UNDER VOLTAGE | : - |
| j) | REVERSE POWER | : - |
| k) | LOW FORWARD POWER RELAY | : - |
| PROTECTION AGAINST GRID FAULTS: | | |
| a) | MINIMUM IMPEDANCE (DISTANCE PROTECTION RELAY) | : Yes Provided
: -do- |
| b) | UNBALANCE (NEGATIVE PHASE SEQUENCE) | : - |
| c) | O/C & E/F (UNIT TRANSFORMER)-LT & HT | : - |
| d) | OVERLOAD ALARM | : - |
| e) | OVERFLUXING RELAY | : - |
| PROTECTION AGAINST GRID DISTURBANCES: | | |
| a) | UNDER FREQUENCY | : Yes Provided |
| b) | OVER FREQUENCY | : - do- |
| c) | POLE SLIP | : - do- |



Handwritten signature in black ink above a blue stamp. The stamp contains the text "CB. (P.P.A.)", "U. P. P. C. L.", "Shakti Bhawan Extn", and "Lucknow." arranged in a curved path.

ANNEXURE V

BILL METER READINGS OF GENERATING PLANT

READING SHOULD BE TAKEN ON 1ST WORKING DAY OF EVERY MONTH, AT 12.00 NOON.

NAME OF THE GENERATING PLANT :
PLACE :
TALUKA :
DISTRICT :
STATE :
C.T. RATIO AVAILABLE/CONNECTED :
P.T. RATIO AVAILABLE/CONNECTED :
SCALE FACTOR (IF ANY) :
MULTIPLYING FACTOR (MF) :
BILLING METER MAKE / NUMBER :

METER READINGS

KWH EXPORT METER READING IMPORT METER READING

PREVIOUS READING
CURRENT READING
DIFFERENCE
DIFFERENCE X MULTIPLYING FACTOR

Authorised Signatory Authorised Signatory Authorised Signatory

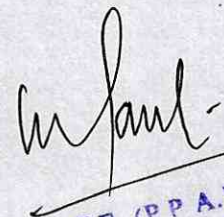
EXECUTIVE ENGINEER EXECUTIVE ENGINEER GENERATING
TRANSMISSION DISCOM PLANT

DATE:

NOTES:

1. DISCOM / STU shall maintain a daily logbook to record hourly readings of the Bill Meter/ HT Meter.
2. The Generating Plant shall maintain a daily log to record the hourly generation and supply in KWh, along with the schedule given by DISCOM's Despatcher.
3. If the meter is changed, the reason/s, date, time of meter change and new meter make and number must be recorded by both parties.





CE (P.P.A.)
U.P.P.C.L.
Shakti Bhawan Extn.
Lucknow. 22

ANNEXURE VI

CHECK METER READINGS OF GENERATING PLANT

READING SHOULD BE TAKEN ON 1ST WORKING DAY OF EVERY MONTH, AT 12.00 NOON.

NAME OF THE GENERATING PLANT :
PLACE :
TALUKA :
DISTRICT :
STATE :
C.T. RATIO AVAILABLE/CONNECTED :
P.T. RATIO AVAILABLE/CONNECTED :
SCALE FACTOR (IF ANY) :
MULTIPLYING FACTOR (MF) :
CHECK METER MAKE / NUMBER :

METER READINGS:

KWH EXPORT METER READING IMPORT METER READING

PREVIOUS READING :
CURRENT READING :
DIFFERENCE :
DIFFERENCE X MULTIPLYING FACTOR :

Authorised Signatory Authorised Signatory Authorised Signatory
EXECUTIVE ENGINEER TRANSMISSION EXECUTIVE ENGINEER DISCOM GENERATING PLANT

DATE:

NOTES:

1. DISCOM /STU shall maintain a daily logbook to record hourly readings of the Check Meter/ HT Meter.
2. The Generating Plant shall maintain a daily log to record the hourly generation and supply in KWh, along with the schedule given by DISCOM's Despatcher.
3. If the meter is changed, the reason/s, date, time of meter change and new meter make and number must be recorded by both parties.



ANNEXURE VII

DAILY GENERATION REPORT

Date :
NAME OF THE GENERATING PLANT :
Installed generation Capacity (MW) :

Active Power (KWh)

Time	Scheduled	Meter Reading	Difference x M.F.
00			
01			
02			
03			
04			
05			
06			
07			
08			
09			
10			
11			
12			
13			
14			
15			
16			
17			
18			
19			
20			
21			
22			
23			
24			

Total (for each column)



CB. (P.P.A.)
D.P.P.C. Br.
Shakti Bawan Extn.
Lucknow.

Summary of Active Power, KWh

Time Scheduled Meter Reading Difference x M.F.

Daily

0600 – 2200

2200 - 0600

Cumulative for Month

0600 – 2200

2200 - 0600

To:

1. Concerned SLDC, DISCOM
2. Executive Engineer, Transmission, DISCOM
3. Authorised Representative of the Generating Plant

Rakesh



hufant
CE. (P.P.A.)
U P P. C. L.
Shakti Bawan Extn.
Lucknow.

Annexure VIII

MONTHLY TRIPPING REPORT

Name and Address of the Generating Plant :
 Installed generation Capacity (MW) :
 Date of First Commissioning (Synchronising) :
 Date of Commercial Operation :
 Date of Synchronising :
 Progressive Days (generation): In Days :

TRIPPING ON FAULT:

S N	Tripping		Tripping Reasons				Synchronization		Total Time Lost		Remark
	Date	Time	Relay Operated	Mech	Elec	Others	Date	Time	Hr	Min	
		Hr Min						Hr Min			

To:

1. Concerned SLDC, DISCOM
2. Authorised Person/ Executive Engineer, STU
3. Authorized Representative of the Generating Plant

[Handwritten Signature]



[Handwritten Signature]

CE. (P.P.A.)
U. P. C. L.
Shakti Bhawan Extn.
Lucknow

ANNEXURE- IX

PLANNED & FORCED OUTAGE

S.N	Outage			Outage Reasons				Synchronisation		Time lost		Remark	
	Date	Time		No Fuel	Mech	Elec	Other	Date	Time		Hr		Min
		Hr	Min						Hr	Min			

Progressive Days :

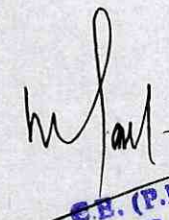
Time Lost (In Hours) :

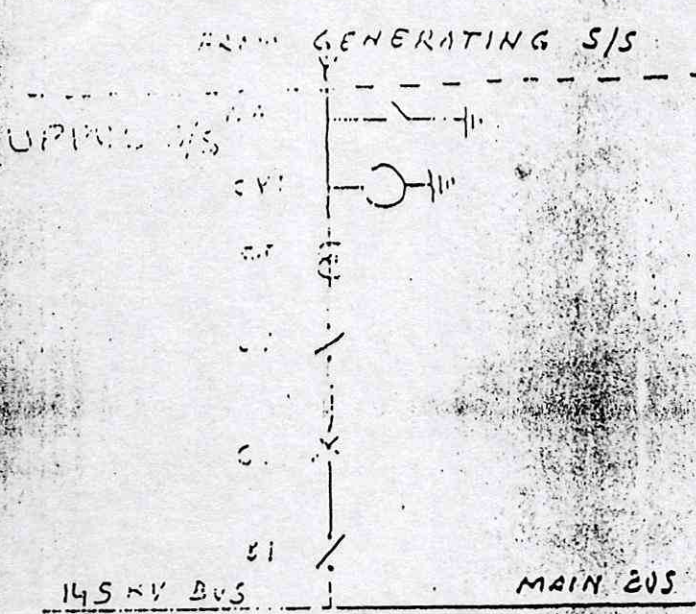
- During Month & Year :
- Since First Commissioning :

To:

1. Concerned SLDC, DISCOM
2. Authorised Person/ Executive Engineer, STU
3. Authorized Representative of the Generating Plant




CB. (P.P.A.)
U. P. P. C. L.
Shakti Bhawan Extu
Lucknow.



1. TENDOM ISOLATOR TO BE USED AS PER SITE CONDITION
2. CVT USED SHALL BE OF 0.2 ACCURACY CLASS.
3. CT OF PROPER RATING AND ACCURACY CLASS 0.2 SHALL BE USED FOR PROTECTION AND METERING AT UPPCL S/S END. HOWEVER ENERGY ACCOUNTING IS OUT OF SCOPE AND SHALL BE DECIDED BY FIELD UNITS AS PER SITE CONDITIONS/PPA.

U P P C L
 ELECTY. S/S DESIGN
 CIRCLE LUCKNOW

STANDARD SINGLE LINE
 DIAGRAM OF SUGAR
 MILLS AT UPPCL S/S

DRN/AE	DRN/AE	S.E.
--------	--------	------

DRG NOVA-06436/



Signature

Signature

DR. (P.P.A.)
 U P P C L
 Shanti Bawan Extn
 Lucknow.